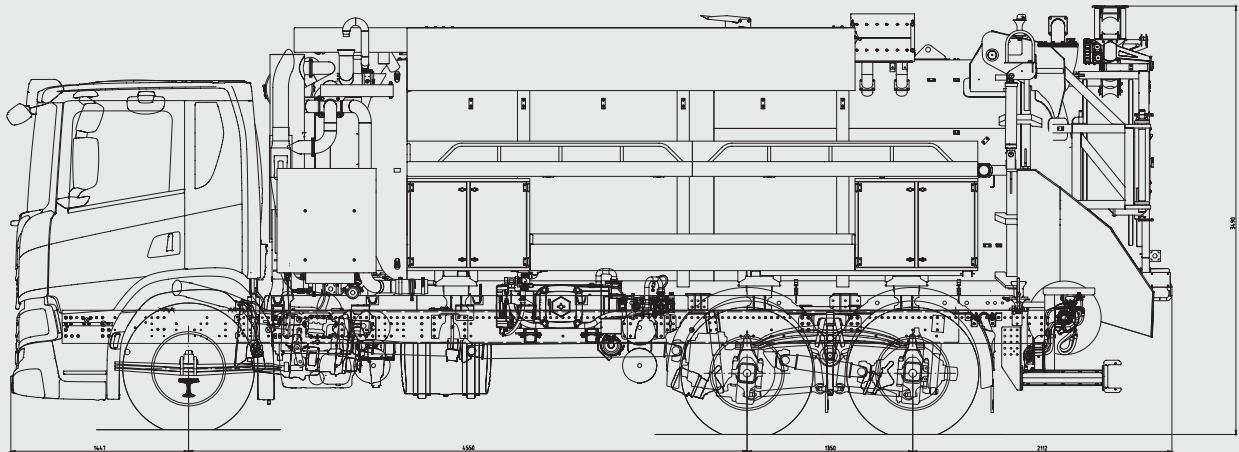


Bucher FlexLine C120



Dimensions and weight

Length	372 in (9,459 mm)
Width	100 in (2,550 mm)
Height	137 in (3,490 mm)
Wheelbase	179 in (4,550 mm)
GVW	57,320 lb (26,000 kg)
TARE weight	Approx. 40,388 lb (18,320 kg)

Engine

Type	DC13 162
Horse power	370 HP
Emission level	Euro 6
Fuel	Diesel

Finish

Undercarriage and components	Grey
Cabin and tank	White
Cabinets and shelves	Anodised
Sign plates	3 pcs.
Text and stripping	Invoiced separately

Transmission

Power take-off	From engine and/or gearbox
Jetting pump	Belt driven
Vacuum pump	Hydraulic driven

Chassis

Scania	P 370 B6x4NZ
Cab type	CP17L
Mudguards	Plastic
Cyclist protection	Aluminium bars on each side
Protection grilles	On rear lights

An all-round combination unit for the demanding user



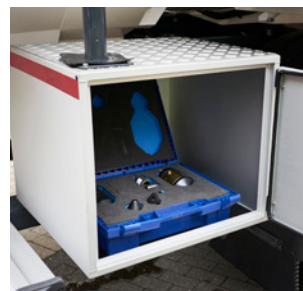
Control panels

Set up, operate and adjust all functions with the control panels.



Jetting hoses

Two different size hoses available to tackle your daily jetting tasks.



Accessories

Extend your unit's capabilities with a wide range of accessories.



Cabinets and Shelves

Store your gear in the shelves and lockable cabinets.

Bucher FlexLine C120

Tank

Volume	2,639 UK gal (12 m ³)
Operating pressure	7.2 psi (0.5 bar)
End cover	Hydraulic, fully automatic

A pneumatically moved partition divides the tank in two variable sizes keeping sludge and water separated.

Partition positions	3, fixed
Locking bolts	3 sets, manual

Tank level indicator	2, sludge & water
----------------------	-------------------

Suction valves top	4", manual
--------------------	------------

Suction valves bottom	6", manual
-----------------------	------------

Water filling valve	2"
---------------------	----

Instantaneous fire coupling	BS336
-----------------------------	-------

High-pressure system

Pump model	Uraca KD 718G
------------	---------------

Pump capacity	86 UK gpm @ 2,031 psi (390 l/min @ 140 bar)
---------------	--

Jetting hose reel	Hydraulic
-------------------	-----------

Hose size	5/4" 492 ft (150 m)
-----------	---------------------

Hose size	3/4" 164 ft (50 m) + 1/2" 196 ft (60 m)
-----------	--

Vacuum system

Pump model	CVS Vacustar W1600
------------	--------------------

Pump capacity	5,865 UK gpm (26,666 l/min) @ free flow
---------------	--

Max. vacuum	90%
-------------	-----

Suction cassette	Hydraulic
------------------	-----------

Suction hose diameter	5"
-----------------------	----

Telescope extension	7 ft (2 m)
---------------------	------------

Coupling	Bauer
----------	-------

Controls

Controller	CAN-BUS
------------	---------

Control panels	3 pcs.
----------------	--------

Storage

Cabinets, double	2 pcs.
------------------	--------

Comfort cabinet Inside double cabinet.
Warm water, mirror, soap, paper holder.

Tool cabinets	1 pcs.
---------------	--------

Hose shelves	2 pcs.
--------------	--------

Tool shelves	2 pcs.
--------------	--------

Lights

Work lamps	5 pcs., LED
------------	-------------

Flash lights	2 pcs., LED
--------------	-------------

Flash bar	1 pcs., LED
-----------	-------------

Side lights	6 pcs., LED
-------------	-------------

Accessories

- One nozzle set
- One vice
- 4 x 16 ft (5 m) 4" hose incl. couplings
- Blow out air hose with couplings for jetting system draining
- 5 ft (1.5 m) 3" hose with TW coupling for cleaning filter unit
- One Bauer reduction 6" M to 4" F
- One Bauer reduction 5" M to 4" F
- One TW reduction 3" to 2"
- One set of cover hooks
- One end cover safety support
- 5" cassette suction pipe

Contact us for more information.

Subject to change without notice.

Bucher Municipal Ltd

Curtis Road, Dorking
Surrey RH4 1XF, UK
Tel. +44 (0) 1306 884 722
Fax: +44 (0) 1306 884151

www.buchermunicipal.co.uk