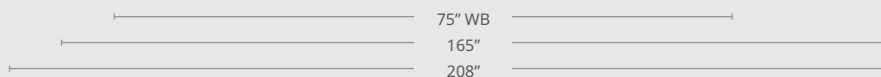
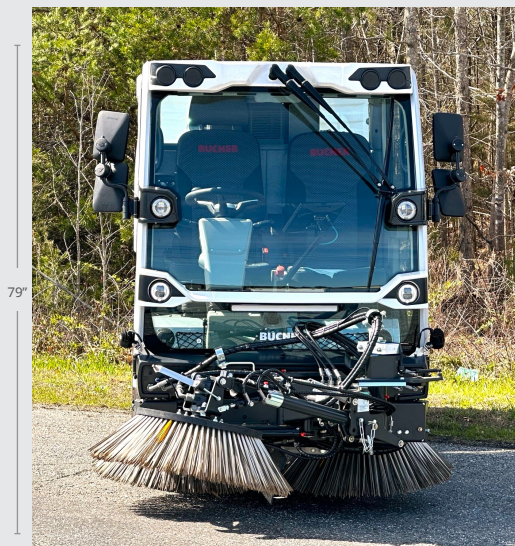


CityCat V20

BUCHER
municipal



Dimensions

Length	165" (4200)
Width	51" (1300)
Height	79" (1999)
Wheelbase	75" (1900)
Track width	43" (1090)
Cleaning width	83" (2100)
Cleaning width 3rd brush	106" (2700)

Weight

Empty weight	5,953 lbs (2700)
Payload	4,630 lbs (2100)
GVW	10,583 lbs (4800)

Emissions

Noise level L_{WA}	98 dB(A)
PM certification	PM 2.5/PM10 ****

Tires

215/75 R16 C M+S

Drive system

Working speed	0-9 MPH (0-15 km/h)
Traveling speed	0-25 MPH (0-40 km/h*)
Climbing ability	up to 30%
Stepless, hydrostatic drive system. Two speed levels with automatic, load-dependent electronic control.	

Engine

Type	Deutz 3 cylinder TCD 2.2 L3
Emission standard	Tier 4 final
Engine Displacement	135 in ³
Output	75 H.P.
Torque	180 ft/lb @ 1600 RPM
Fuel tank	18 gal
Electrical system	12 V
Battery	95 Ah

* According to national legislation



Unparalleled suction performance

Just like the floating suction mouth, the straight suction hose also belongs to the Bucher "DNA" and results in minimum risk of blockage and optimum air flow for trouble-free operation.



Articulated steering for maximum maneuverability

One benefit of articulated steering is the resulting maneuverability. The articulated steering means that the suction mouth is always positioned in the direction of travel and prevents irritating traces of dirt.



Unique operating concept

The multi-functional armrest with smart start function in combination with the digital 4.3 inch display makes it possible to operate all working functions with one hand.

CityCat V20

Chassis

Two-part ladder-type frame chassis with “C” profile construction. Independent suspension with shock absorber and screw spring on the front axle and leaf suspension with shock absorber on the rear axle.

Axles and steering

Driven front axle by means of two-stage wheel motors with hydraulic locking action. Articulated steering with load-sensing steering hydraulics.

Working hydraulics

Hydraulic unit with silent gear pumps for fan, steering, auxiliary functions, side and front brush drive.

Brakes

Hydraulic dual-circuit brake system with disc brakes on front and rear axle. Parking brake (spring energy brake) acting on the front axle.

Cab

Comfortably suspended sound-insulated aluminium cab. Windscreen made of heat-reflecting, curved, low-reflection safety glass. Two sliding windows in each door. Variable heater, sun screens, screen wiper with washer. Individually adjustable, sprung driver’s seat with head rest and 3-point safety belt. Angle- and height-adjustable steering column.

Control unit

Multi-functional armrest with smart start function makes it possible to operate all working functions with one hand. Optional 10.1 inch touch display with intuitive design for extended functions, central overview of all settings and visual diagnostic system. The displayed vehicle set-up can be individually chosen by the driver. All relevant information at a glance at any time thanks to the digital 4.3 inch display.

Water system	(liters)
Water volume	112 gal (425)
Fresh water volume	72 gal (275)
Used water volume	40 gal (150)

The water tank for used water can optionally be used as expansion for fresh water. Electrically controlled water pump for the water nozzles.

Hopper

Container made of stainless steel, can be tilted and closed hydraulically	
Volume	2.6 YD³ (2.0 m³)
Dumping height	61" (1555 mm)
Dumping width	41" (1043 mm)

Sweeping system

26" wide suction nozzle floating between the front wheels, made of cast aluminum hanging on a patented compensation mechanism. Adjustable high-performance stainless steel fan.

Brushes

2 side brushes left & right Ø 32" (800 mm)	
Speed adjustment	0–120 RPM
Impact-proof brush suspension.	

3rd front brush for cleaning width of 106" (2700 mm) and for cleaning corners and ramps, can be used on the left and right (optional).

Options

- Air conditioning
- Rear view and suction mouth camera
- Radio with Bluetooth & DAB+
- Hydraulically tiltable side brushes
- Side brush single lift
- Wander hose
- Weed brush
- Water flushing bar
- High pressure water system
- EasyClean system
- LED work light
- Data capture

A range of options are available – contact us for more information.

Subject to change without notice.

Scan for your free report



The 5 Things
You Must Know
Before Buying a
Street Sweeper

Bucher Municipal North America Inc.

105 Motorsports Road
 Mooresville, NC 28115
 Tel. +1 704 658 1333
 info.us@buchermunicipal.com

www.buchermunicipal.com

Driven by better