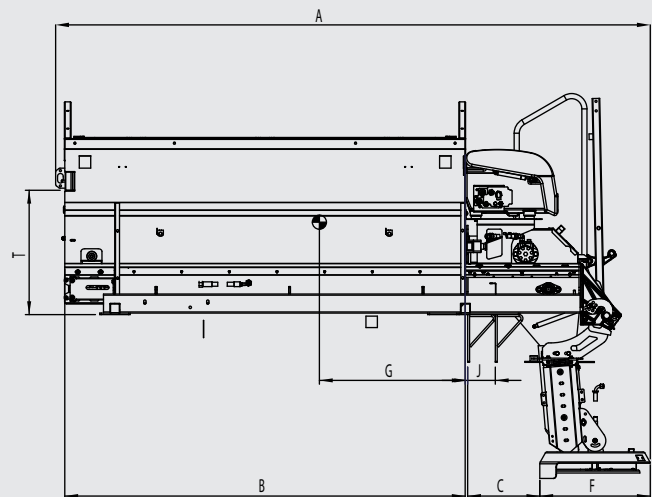
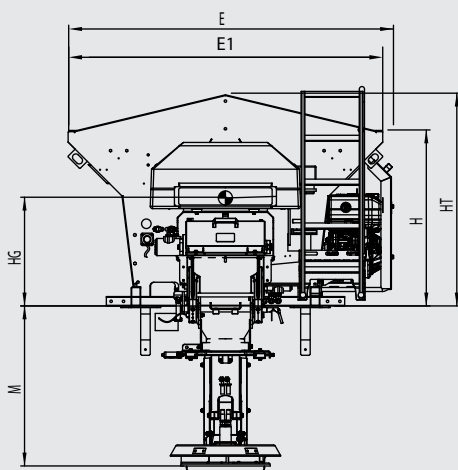


Bucher One H

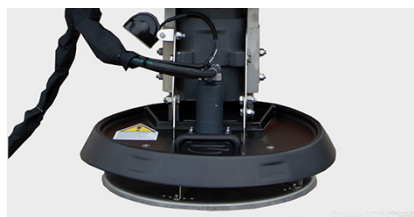


Key Features



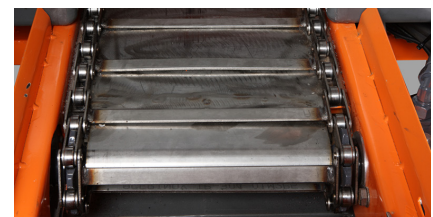
Hopper in AISI 304 stainless steel

Bucher One H series salt spreaders are built exclusively with stainless steel to ensure a highly reliable and long-lasting product.



"Light" spreading unit

Five models are available for different platform heights of the vehicles where Bucher One H units will be mounted. The flatbed height measurements compatible with Light unit range from 870 mm to 1860 mm



Chain extraction system

In AISI 304 stainless steel metal strip with cross bars. The chain is driven by toothed sprockets which ensure constant traction without slipping.

Bucher One H

Technical data - hydraulically-operated Bucher Briner One H

		HO111	HO116	HO213	HO221	
B	Min. loading length (recommended +150 mm)	1650	1650	2150	2150	mm
A	Total length	2560	2560	3060	3060	mm
E	Width at the hopper	1650	1650	1650	1650	mm
E1	Width at tanks	1650	1650	1650	1650	mm
H	Hopper height	920	1115	920	1115	mm
HT	Roof height	1115	1315	1115	1315	mm
	Capacity of hopper	1.1	1.6	1.3	2.1	m ³
	Capacity of tanks	530	530	850	850	l
	% humification	0÷30	0÷30	0÷30	0÷30	%
G	No-load centre of gravity	480	480	640	640	mm
G2	Loaded centre of gravity	800	800	1050	1050	mm
	No-load spreader weight	380	400	410	430	kg
	OPT U1 humidifier weight	60	60	70	70	kg

Technical data and images are indicative and not binding.
 Reference technical standards: Directive 2006/42/CE (CE mark) and UNI EN 13021

Technical notes for mounting on vehicles

- For hydraulically operated spreaders, the vehicle must be equipped with a hydraulic system capable of continuously supplying at least 25 l/min - 200 bar.
- Tachometric signal available in the cab for tachometric dependence dosing.
- 24V power socket available in the cab for control panel power supply.



Control box (optional)
 Electronic control system for setting spreading parameters with Ecosat or EcoTron versions.



Auxiliary engine (optional)
 Driven by an auxiliary diesel or petrol engine; can be installed on the side or at the front.



Hydraulic drive
 Driven by the vehicle's hydraulic system and compliant with the EN15431 European standard.

Technical data - Bucher Briner One H driven by a front auxiliary engine

		HO111	HO116	HO213	HO221	
B	Min. loading length (recommended +150 mm)	2170	2170	2670	2670	mm
A	Total length	3020	3020	3520	3520	mm
E	Width at the hopper	1650	1650	1650	1650	mm
E1	Width at tanks	1650	1650	1650	1650	mm
H	Hopper height	920	1115	920	1115	mm
HT	Roof height	1115	1315	1115	1315	mm
	Capacity of hopper	1.1	1.6	1.3	2.1	m ³
	Capacity of tanks	530	530	850	850	l
	% humification	0÷30	0÷30	0÷30	0÷30	%
G	No-load centre of gravity	530	530	700	700	mm
G2	Loaded centre of gravity	800	800	1050	1050	mm
	No-load spreader weight	470	490	500	520	kg
	OPT U1 humidifier weight	60	60	70	70	kg

Technical data and images are indicative and not binding.

Reference technical standards: Directive 2006/42/CE (CE mark) and UNI EN 13021

Technical data - Bucher Briner One H driven by a side-mounted auxiliary engine

		HO111	HO116	HO213	HO221	
B	Min. loading length (recommended +150 mm)	1650	1650	2150	2150	mm
A	Total length	2560	2560	3060	3060	mm
E	Width at the hopper	1650	1650	1650	1650	mm
E1	Width at tanks	1650	1650	1650	1650	mm
H	Hopper height	920	1115	920	1115	mm
HT	Roof height	1115	1315	1115	1315	mm
	Capacity of hopper	1.1	1.6	1.3	2.1	m ³
G	No-load centre of gravity	500	500	680	680	mm
G2	Loaded centre of gravity	800	800	1050	1050	mm
	No-load spreader weight	470	490	500	520	kg
	OPT U1 humidifier weight	60	60	70	70	kg

Technical data and images are indicative and not binding.

Reference technical standards: Directive 2006/42/CE (CE mark) and UNI EN 13021



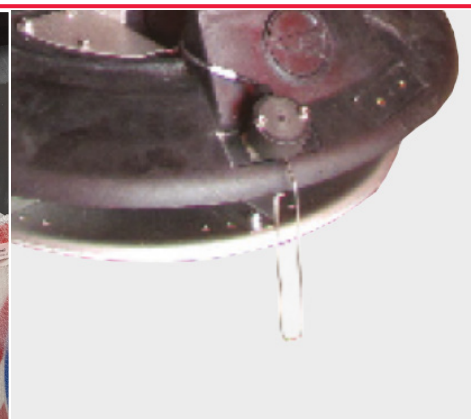
Asymmetry (optional)

Electrical control of spreading asymmetry in 5 presettable positions.



Ladder

Safety ladder on RH rear side in AISI 304 stainless steel.



Salt sensor (optional)

A mechanical sensor indicating on the control panel in the driver's cab that no salt is coming out of the spreading disc.

Chain extraction system

Comprising stainless steel parallel crosspieces, it allows uniform emptying of the hopper, excellent spreading precision and avoids the bridge effect. All parts of the chain including the platform are in AISI 304 stainless steel.

“Light” spreading unit

The structure and disc are in stainless steel and the conveyor is in polyethylene. The disc diameter is 470 mm and spreading is performed thanks to 6 bolted blades, for a maximum spreading radius of 8 metres. The operator is protected by a sensor that allows disc rotation to be blocked (if it is operating) when the unit is overturned. Manual adjustment of asymmetry in 5 different positions

Spreading data

J - Hopper-stop adjustment from hopper head	0÷145 mm
C - From hopper-stop to spreading unit	380÷235 mm
Spreading width	2÷8 m
Salt spreading dosing	5÷40 g/m ²
Sand spreading dosing	10÷350 g/m ²
Work speed	5÷60 km/h

Hopper

In extra-thick stainless steel. Continuous robot welding. The widened base ensures

a lower centre of gravity thereby, making spreading operations safer.

Paintwork

Metal structural components are painted in several stages: SA 2.5 shot blasting; powder primer with 30% galvanized epoxy resin; polyester powder painting, cured at 200 °C. The hydraulic and electrical parts, on the other hand, are treated with Teroson Terotex 3000. This type of painting has obtained certification from an independent laboratory for resistance to more than 2000h exposed to salt spray.

Screen grilles

In galvanized steel with 60x60 mesh. They prevent entry of over-sized material into the hopper.

Lump-breaker chains

The lump-breaker chains, located at the bottom of the conveyor chain, crush blocks of salt to prevent them reaching the spreading unit directly

Auxiliary motor technical data

Maximum auxiliary diesel engine power	5.5 kW
Maximum auxiliary diesel engine torque	16 Nm
Auxiliary diesel engine tank capacity	4.3 l
Maximum auxiliary petrol engine power	6.6 kW

Maximum auxiliary petrol engine torque	19,1 Nm
--	---------

Auxiliary petrol auxiliary engine tank capacity	6 l
---	-----

Auxiliary auxiliary engine oil tank capacity	28 l
--	------

Main optional weights

OPT L7 rear light repeater bar weight	25 kg
---------------------------------------	-------

OPT T1 roof weight	10 kg
--------------------	-------

OPT M5 ladder weight	20 kg
----------------------	-------

Sign weight	10 kg
-------------	-------

Crusher weight	20 kg
----------------	-------

Optional

- Rear light repeater bar
- Rear ladder
- Roller breaker
- Power supply voltage 24V
- Weight transfer plate

Bucher Municipal



For local contact and support, please scan the QR code or visit

buchermunicipal.com

Driven by better

