

# Bucher Municipal News

Summer 2021 | No.2

Keeping in touch across the UK

## New state-of-the-art Unit 10 facility now open in Dorking

The new Unit 10 building at Dorking is now complete and has been handed over by the builders at the end of May as planned.

Bucher Municipal began this ground breaking venture late last year, with the first ground broken on 5th October.

The 1,900m<sup>2</sup> of new workshop space is used for production of our specialist vehicle range, namely tankers and winter equipment, and for mounting our aero runway sweeper skid units – and also for the conversion of truck chassis for our V65e electric sweeper. A further 450m<sup>2</sup> of office space that our sales and marketing staff have moved into, this space is across three floors.

The new facility has been designed fully in-line with our sustainability policy and is fitted with energy efficient lighting and compressors, and fast-acting doors. Electric vehicle charging points will be installed, as well

as photovoltaic solar cells which generate electricity and reduce our energy costs. There is also a solar (warm air collector) wall fitted on the southern elevation of the building, which heats the air in the building's HVAC (heating, ventilation and air conditioning) system. The system supplies heating and cooling, and controls the temperature, humidity and movement of air throughout the building for environmental comfort.

The HVAC contributes to the safe and healthy working environment for staff, delivering thermal comfort and good air quality, and the space has been designed with plenty of natural light and good acoustics to create a pleasant work-space.

The company's investment in the new factory demonstrates the confidence it has in the UK division, and its long-term commitment to the business.





# Why choose a compact sewer cleaning unit?

The immediate benefit of choosing a compact sewer cleaning unit is accessibility. In the UK alone this will become even more important as time goes on. In 2020 the UK Government has dedicated £100bn for investment into infrastructure. Among many things this will see an improvement in existing roads and country lanes as well as the implementation of new roads, cycle lanes and community facilities. This poses new challenges for municipalities faced with the responsibility of maintaining the sewer networks in cities. Navigating and operating through roads, one-way systems and restricted areas will become an increasingly complex task over the coming years.

Bucher Municipal's answer is the CityFlex C40, a compact combi unit that is developed for city centres. Developed to easily move around both densely populated areas as well as in-between and inside buildings. Hosting a range of accessories and boasting some seriously strong credentials. The CityFlex C40 will not fall short due to its size.

Even with its compact size the CityFlex C40 has a tank with a capacity of 3,996 litres. Making this unit more than suitable to tackle any standard sewer maintenance work. Just like other larger Bucher Municipal units, the CityFlex C40 has a movable partition that is moved hydraulically as the operator jets or vacuums. This provides maximum flexibility as the tank can be prepared in accordance to the job at hand. For instance, before a jetting job the full tank can be utilised and filled with water. As water is used the partition will move to make more room for sludge and waste to be vacuumed.



## Order 2 Go

The Cityflex unit is manufactured in 2 main parts. The basic tank unit is brought into Dorking from our factory in Denmark. Once these arrive in the UK the chassis can be mounted in a short amount of time for both stock and factory orders. This process allows the CityFlex C40 to be sold through the Order 2 Go system which means these can be delivered to customers within a few days from ordering. The Order 2 Go process makes up an integral part of the Bucher Municipal business model with fast delivery directly to the customer. Contact your local sales manager for any enquires.



# Live demonstrations by Bucher Municipal



At Bucher Municipal we invest heavily into the research and implementation of the latest technology across all our products. Our sewer cleaning units are at the forefront of our innovative approach. New control systems, recycling technology, movable partitions and remote jetting units are only a snapshot of what is on offer. Subsequently, we need to ensure our customers are familiar with the operation of a Bucher Municipal sewer cleaning unit. One of the ways we do this is to offer demos to our customers. And there are two options.

## Dry demonstrations

These take place at the customer site. The unit is taken over at a time and date that is agreed upon to deliver a demonstration to their team. Here a walkthrough would be delivered including an overview of the unit's features operation, and how this will benefit the company in question. The Recycler CR120 for instance has an intricate water filtration system that allows wastewater to be used again. However, these pumps need to be maintained to ensure water is recycled down to its usual 200 microns, preserving the longevity of its parts. This is a perfect example of how a

live demonstration can benefit a team that are interested or have recently purchased a Bucher Municipal sewer cleaning unit. Another example being the control systems available. Unique to the FlexLine and Recycler series is the all new M20 control system. Developed in a real-life environment with feedback from our customer. The M20 control system hosts a range of new features with improved functionality. Demonstrations from our training team can teach anyone how to utilise the new control system to its full potential.

The immediate benefit of dry demonstrations is the convenience. These can be booked on short notice or far in advance and arranged on site. This means anyone who needs to view the demonstration can be present, to view and ask any needed questions.

## Wet demonstrations

These demonstrations take place in actual working environments, providing a hands-on approach by putting the customer in the driving seat. In a wet demonstration the customer can take part in the job at hand as though the unit is their own. The obvious benefit is

anyone interested can see how it performs against unplanned blockages and cleaning jobs, affirming the exceptional technology that underpins Bucher Municipal's sewer cleaning range. In this example a wet demonstration goes above and beyond simply demonstrating how the Recycler's water filtration system operates. It delivers a first-hand view of how much more water can be utilised and reused. Whilst typically a sewer cleaning unit is limited by its tank, a wet demonstration can authenticate just how much more can be done in one visit without having to refill the tank when using recycling technology.

A wet demonstration allows the customer to receive a more personalised experience. Having the chance to test this in a live working environment allows the customer to identify what parts of the unit they are least acquainted with.

## The market's most flexible recycling unit

The Recycler CR120 is the demo unit of choice. One of Bucher Municipal most versatile units designed for no

mid-day refills. Equipped with a 5-step automatic recycling system with continuous operation, wastewater is always being recycled and reused.

## What does this mean for our customer? More profit

Decreased down time, less fuel used, and more jobs completed. But the features don't stop short of its recycling system. It has a tank of 11.997 litres, a suction cassette with a 5" suction hose and a 2-metre extension and a jetting pump that delivers at 2,030 psi. For the operator's convenience there are additional cabinets, hose shelves, two tool shelves and a hand wash facility. Finally, to optimise your workday there are a range of accessories available including nozzle sets, hoses with couplings, reduction adapters, cover hooks set and more.

A demonstration delivered by Bucher Municipal's expert team of trainers can help anyone make the most of their unit. Each is designed flawlessly, and a little bit of extra knowledge can go a long way.



# The all-new M20 control interface



Reform your workday with the M20 control system that is optimised for performance, safety and usability. It has replaced the old control system for the Bucher Municipal FlexLine and Recycler series. The all-new interface brings forward a range of updates to increase functionality and versatility for Bucher Municipal sewer cleaning units.

Developed and tested on the ground in a real-life industry environment with our Danish customer, Kloak Ekspressen. A company that uses Bucher Municipal units daily that contributed their own input based on practicality. The new control system has been made to optimise your workday; the features introduced in this latest edition are centred around man-machine collaboration. Acting as a window between the operator and the unit itself. A completely fresh

interface has been implemented with new high contrast colours that are visible up to 8 metres away, icon styling and an intuitive icon-based navigation system.

The image-based navigation is aimed at delivering quick navigation to increase productivity in everyday working conditions and provide simplicity for emergency situations. Coupled with integrated messages that are now split into alarm messages and ordinary messages the operator will be best equipped and informed to respond to any rapidly changing situation. Designed for effortless navigation, the M20 control system is primed to thrive in any working situations from jetting to CCTV operations for both private operators and large-scale municipalities.



# Helping out the RAF with a difficult Wet Well Cleanse



# Jetting from outfall in Cullompton



# After a weekend wash



# Superflex flowline

Taken whilst loading with water just before going out to work in the Limehouse Link tunnel cleaning the main line surface lines





# Hydro Cleansing adding Bucher Municipal to their fleet



## Wiltshire area emptying septic tanks



## Pump out job for Lancashire Council



## Tight squeeze in Royal Wootton Bassett cleaning out storm drains





# The UK Training Team



At Bucher Municipal we pride ourselves on the training and demonstrations we offer to our customers. We offer some of the latest and most advanced technology in the sewer cleaning market designed to tackle complex situations and perform powerful manoeuvres.

To make sure our customers can utilise all the features of their new sewer cleaning unit, free training is provided with each new purchase. This training is available for up to 4 operators. Depending on the unit, a typical training course would run over one to three days. This will cover how to maximise the use of the unit.

To make sure training is complete and everyone in attendance has a strong level of knowledge, each person will need to complete and pass an online test. These will be updated as the units advance. Once all the tests have been passed, the operator will receive a special operator's card and receive online certification. This is to recognise anyone who has passed these tests will have reached a high standard of training and thoroughly understands how to use the unit in question. To date this year over 300 operators have been trained and

certified by the Bucher Municipal team. Advanced and refresher training can also be provided at a cost of £500 a day which will provide the people in attendance the insight to use the unit to its absolute potential.

### Strengthening the Bucher Municipal Training Team

The training team at Bucher Municipal aren't limited to just sewer cleaning units. To cover even more aspects additional members with unique industry knowledge

have been added to the team. The new topics now included in training are:

- Sewer Cleaners Operational and Technical training
- Gritters Technical Training
- Sweepers Technical Training

## Our Team in more detail

### Matt Lewis Global Training and Demo Manager

Now fully involved in all aspects of the sewer cleaning business and part of the senior management team.

### John Alvey Technical Support & Training Specialist

John has now been with us for over 6 months and his results are outstanding. John delivered his first course in May which was classed as the best course delivered by Bucher. He is currently working on the Gritters to deliver courses through the winter season.

### George Ruck

He is taking a new job title and continuing his role with training on sewer cleaners but now encompassing our own Bucher engineers. Helping them more proficient on the sewer cleaners. George will also be a Technical training specialist.

### Steve Strange Technical Support & Training

Steve has been an engineer for over 10 years at Bucher Municipal and will be joining the team in July. Another member joining the team that has outstanding knowledge of sweepers to upskill and help our depots and engineers.



# Meet the training team



**Matt Lewis**  
Global Training and Demo Manager  
matt.lewis@buchermunicipal.com  
M: +44 (0) 7944 559091  
Bucher Municipal Ltd.  
Unit 710 Banbury Ave, Slough  
SL1 4LR, United Kingdom



**George Ruck**  
Training Instructor  
george.ruck@buchermunicipal.com  
M: +44 (0) 7763 914846  
Bucher Municipal Ltd.  
Unit 710 Banbury Ave, Slough  
SL1 4LR, United Kingdom



**Steve Strange**  
Technical Support & Training  
steven.strange@buchermunicipal.com  
M: +44 (0) 1179 382782  
Bucher Municipal Ltd.,  
Unit 5, Lescren Way,  
Avonmouth, Bristol  
BS11 8DG, United Kingdom



**John Alvey**  
Technical Support & Training Specialist  
john.alvey@buchermunicipal.com  
M: +44 (0) 7776 148166  
Bucher Municipal Ltd.,  
Curtis Road, Dorking, Surrey  
RH4 1XF, United Kingdom

# Prioritise flexibility

A Bucher Municipal sewer cleaning unit allows for flexible working with a practical movable partition in the tank.

No one job is the same, some require more jetting, some more vacuuming and other jobs can change as it evolves. To make sure the operator isn't limited by their capacity to hold water or waste, each Bucher Municipal tanker has a movable partition. The partition changes as the operator jets and vacuums, optimising the space in the tank of the unit. The partition will always keep any waste and water separate at all times. If a job will require only jetting, the tank

can be filled to maximum capacity with water beforehand. For situations requiring a lot of vacuuming the tank can be left completely empty. Not being limited by a fixed partition gives the operator more control over their facilities and allows them to plan ahead.

This translates into time and money. If the full tank can be utilised for a task that only requires jetting, there will be no unneeded trips to fill up with more water. The operator can stay at the job until it is complete. This means more jobs can be done in a day and less fuel will be used in between each one.





Next issue Summer 2022

If you would like your contact details altered, removed or added to our distribution list, or require further information about any Bucher product, please contact our Marketing Department:

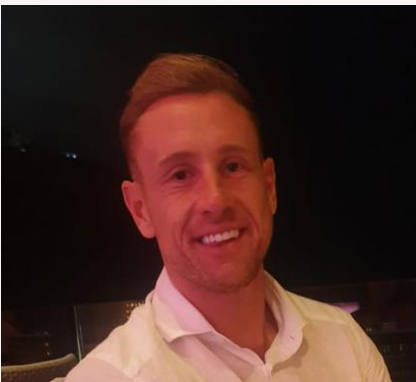
Tel: 01306 884722 Fax: 01306 884151  
E-mail: [enquiries.uk@buchermunicipal.com](mailto:enquiries.uk@buchermunicipal.com)  
[www.buchermunicipal.com](http://www.buchermunicipal.com)



**Bucher Municipal Limited**  
Curtis Road, Dorking  
Surrey, RH4 1XF

PEOPLE

Meet  
the  
sales  
team



**Daniel Phinn**  
Regional Sales Manager  
Tankers - North  
[daniel.phinn@buchermunicipal.com](mailto:daniel.phinn@buchermunicipal.com)  
M: +44 (0) 7432 476629  
Bucher Municipal Ltd.,  
Unit 1, 67 Roman Way, Lancashire,  
PR2 5BE, United Kingdom



**David Weeks**  
UK Sales Manager  
Sewer Cleaners  
[david.weeks@buchermunicipal.com](mailto:david.weeks@buchermunicipal.com)  
T: +44 1306 884722  
Bucher Municipal Ltd.,  
Curtis Road, Dorking, Surrey  
RH4 1XF, United Kingdom



**Tom Brewer**  
Regional Sales Manager  
Tankers - Midlands  
[tom.brewer@buchermunicipal.com](mailto:tom.brewer@buchermunicipal.com)  
M: +44 (0) 7496 049602  
Bucher Municipal Ltd.,  
710 Banbury Avenue, Slough,  
SL1 4LR, United Kingdom

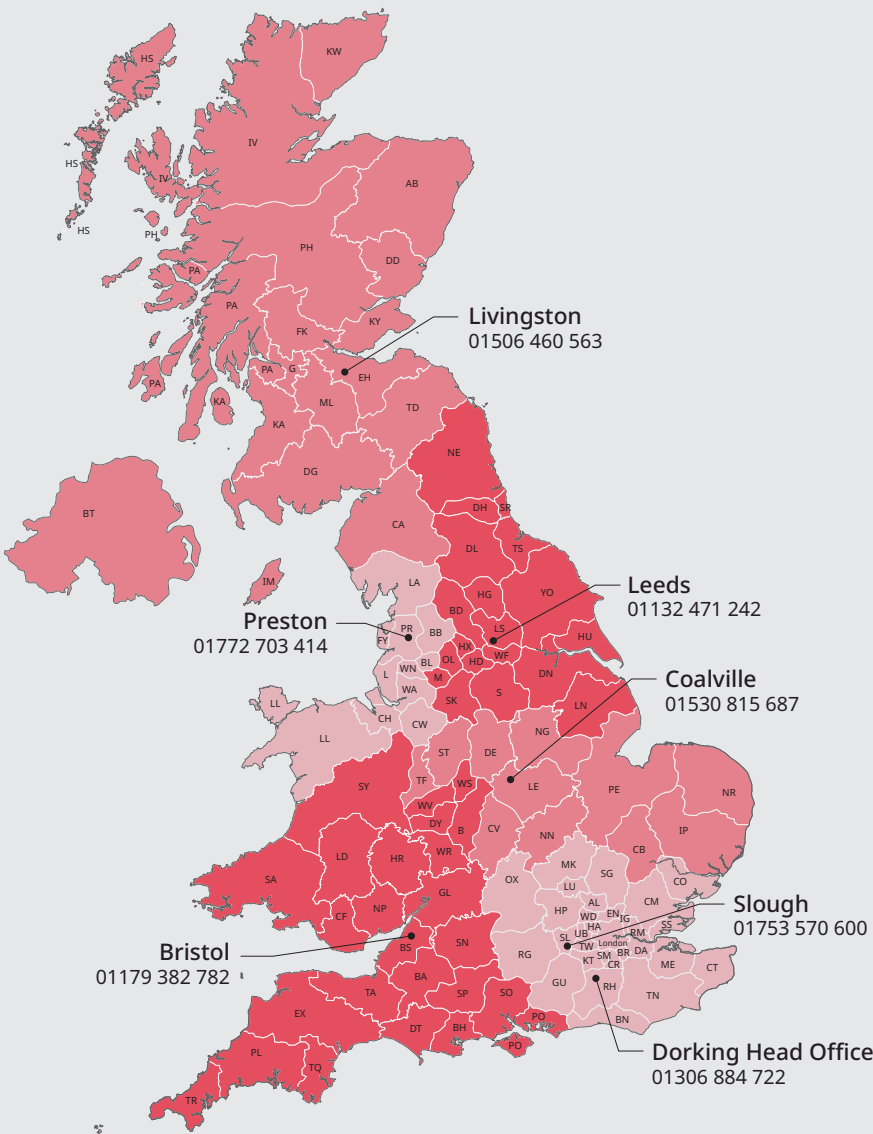


**Marc Rapson**  
Regional Sales Manager  
Tankers - South  
[marc.rapson@buchermunicipal.com](mailto:marc.rapson@buchermunicipal.com)  
M: +44 (0) 7837 485810  
Bucher Municipal Ltd.,  
Curtis Road, Dorking, Surrey  
RH4 1XF, United Kingdom



**Craig Mitchell**  
Regional Sales Manager  
Tankers - Scotland, Carlisle and  
Northumberland  
[craig.mitchell@buchermunicipal.com](mailto:craig.mitchell@buchermunicipal.com)  
M: +44 (0) 7712 877766  
Bucher Municipal Ltd.,  
Unit 4, Elphinstone Square  
Deans Industrial Estate, Livingston  
EH54 8RG, United Kingdom

Sweepers, Winter Equipment & Sewer Cleaners  
UK Service Centres



Where  
you can  
find us

**UK - Coalville**  
Service Workshop - Unit 1,  
Samson Road,  
Leicestershire LE67 3FP  
Tel: 01530 815 687  
[coalvilleservice@buchermunicipal.com](mailto:coalvilleservice@buchermunicipal.com)

**UK - Preston**  
Service Workshop - Unit 67,  
Roman Way,  
Lancashire PR2 5BE  
Tel: 01772 703 414  
[preston@buchermunicipal.com](mailto:preston@buchermunicipal.com)

**UK - London**  
Service Workshop - Unit 710,  
Banbury Avenue,  
Slough SL1 4LR  
Tel: 01530 815 687  
[sloughservice@buchermunicipal.com](mailto:sloughservice@buchermunicipal.com)

**UK - Dorking Head Office**  
Unit 5,  
Curtis Road,  
Dorking,  
Surrey RH4 1XF  
Tel: 01306 884 722

**UK - Bristol**  
Unit 5 - Lescren Way,  
Avonmouth,  
Bristol BS11 8DG  
Tel: 01179 382 782  
[bristol@buchermunicipal.com](mailto:bristol@buchermunicipal.com)

**UK - Livingston**  
Unit 4 - Elphinstone Square,  
Dean Industrial Estate,  
Livingston EH54 8RG  
Tel: 01506 460 563  
[livingston@buchermunicipal.com](mailto:livingston@buchermunicipal.com)

**UK - Leeds**  
Unit F2- Copley Hill Trading Estate,  
Whitehall Road,  
Leeds,  
West Yorkshire LS12 1HE  
Tel: 01132 471242  
[leeds@buchermunicipal.com](mailto:leeds@buchermunicipal.com)