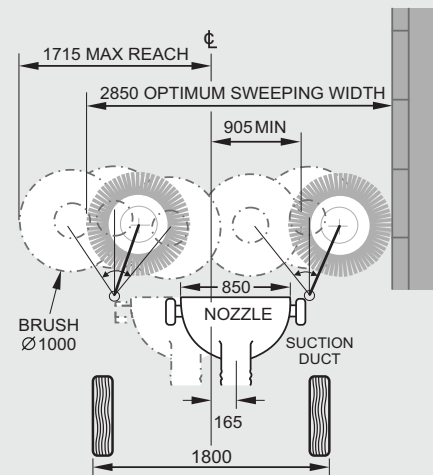
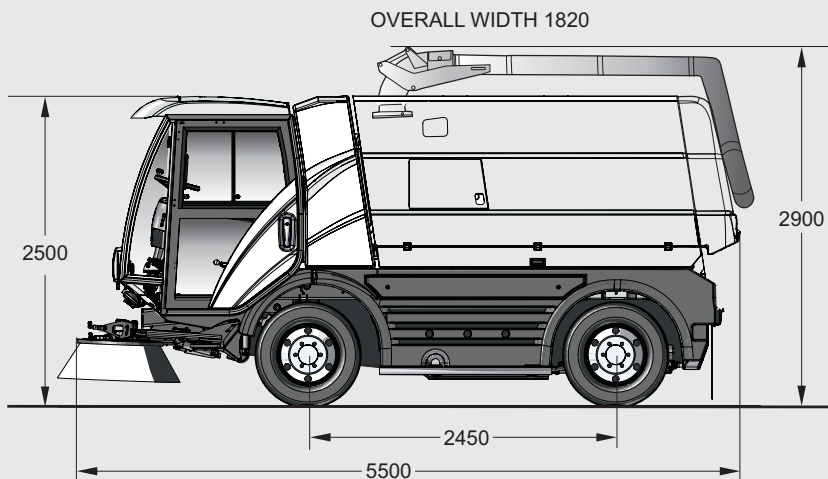


C401



Dimensions

Length	5500 mm
Width	1800 mm
Height	2900 mm
Wheelbase	2450 mm
Track width	1513 mm
Max. cleaning width	2650 mm
Turning radius	2950 mm

Tyres

265 / 70 R 19.5

Noise level cab

70 dB(A)

Driving Performance

Working speed	0-16 km/h
Travelling speed	0-50 km/h / 0-80 km/h
Climbing ability	22 %

Chassis

GVW	10'500 kg / 10'400 kg
Empty weight	5700 kg
Payload	4800 kg / 4700 kg

Engine Euro 6

FPT, Iveco Euro 6	NEF4 Euro VI
Engine displacement	4485 cm ³
Output	118 kW
Torque	580 Nm
AdBlue tank	30 l

Engine Stage IIIA

FPT, Iveco Stage IIIA	NEF4 Stage III A
Engine displacement	4485 cm ³
Output	104 kW
Torque	608 Nm

Fuel tank	100 l
Electrical system	24 V

C401: the mid-sized sweeper with big ideas



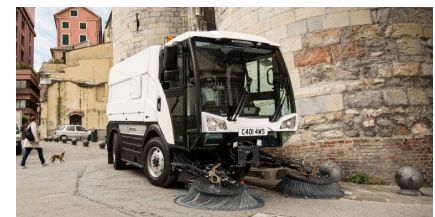
Low-emission Engine

The C401 is purpose designed and built as a compact road sweeper, and along with the latest Euro 6 engine, it effectively regulates the power required and automatically adjusts the engine revs to match the demand, reducing fuel costs and lowering emissions.



Manoeuvrability

The front-facing brushes can access hard-to-reach areas and the fingertip control, with unrivaled visibility of the brushes and the nozzle, makes the sweeping maneuverability comparable to much smaller sweepers.



Road handling

The compact outer dimensions, as well as the four-wheel steering that can be turned on and off, give the vehicle maximum maneuverability and ensure perfect directional stability and safety for everyday work.

C401

Steering

Four wheel standard in workmode.
Turning radius 2950 mm kerb to kerb.

Transmission

Full hydrostatic transmission with closed loop circuit and variable angle swash plate axial piston pump and motor. Maximum transit speed up to 80 km/h.

Suspension

Front Linkage system comprising V link and two reaction rods, plus axially mounted coil springs and bump stop with shock absorbers.

Rear Two multi leaf springs with shock absorbers.

Brakes

Power assisted hydraulic disc brakes with a front-rear split coupled with a rear axle load apportioning valve.

Impeller

High pressure centrifugal Ø 900 mm fan unit mounted to hopper roof provides powerful suction means for the pickup nozzle and duct conveying system. Driven by hydraulic motor with integral heavy duty support bearing. Dynamically balanced multivane low noise fan impeller with wear resistant blades.

Driver's cab

Recirculation air type heater with face and floor level vents and fresh air intake option. Fully glazed with tinted safety glass. Heated laminated windscreen. Twin pantograph two speed electric windscreen wipers with intermittent wipe and electric screen washer. Fully adjustable air suspension cloth covered driver's seat with adjustable back support and passenger seat with three point seat belts. Ergonomically placed switches, clustered according to function. Adjustable arm rest incorporating sweeping controls. Overhead console incorporating lighting switches, radio/MP3 player & 7" full colour JVM screen.

Hopper

All 1.4003 stainless steel welded construction.

Volume	5.6 m ³
Dumping height	1550 mm
Dumping width	1700 mm
Tipping angle	50°

Water system

Water capacity 825 l

Brushes

2 side brushes left and right Ø 1000 mm

Speed adjustment 0-125 rev./min.

Independent brush pressure control and positioning.

Options

- Air conditioning - R134a refrigerant
- Automatic lubrication system
- High dump
- Spare wheel
- Supawash: High pressure washing system
- Third brush unit
- Rotatilt Side Brush Option
- Wander hose
- Water recirculation
- Electronic battery isolator
- Integrated reverse camera system
- Rear arrow sign board

A variety of other options are available - contact us for more information.

Subject to change without notice.



Bucher Municipal

For local contact and support visit
www.buchermunicipal.com

