

## Configuration examples

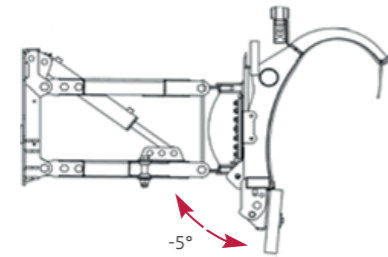
Different scraping edge for different snow type:

- Bi-shore neoprene scraping edge for soft or wet snow
- Steel scraping edge for hard packed or iced snow

	SCRAPING EDGE MATERIAL	ANGLE
LC	Neoprene Rubber	-5°
LN	Rubber + Steel	-5°/15°

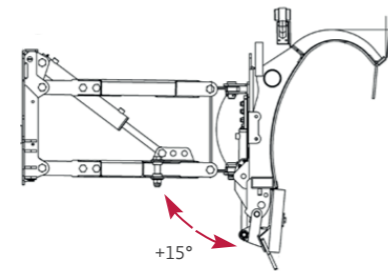
### “LC” with single neoprene scraping edge

In “Neoprene” special realisation with bi-shore structure; His profile copy perfectly the road surface shape. It doesn't generate noise, with asphalt or also stone block pavement, respecting the existing norm. It doesn't generate vibration to the equipment and to the truck. Lifecycle of this special neoprene scraping edge higher than steel one (up to 10 times). Lower maintenance cost due to the easy structure without spring security. Conform to the EN13021 norm.



### “LN” with neoprene scraping edge and a second steel scraping edge with hydraulic actuation from cab

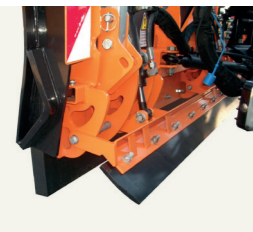
Related to the snow type, possibility to set from the cab the steel or neoprene scraping edge. The steel scraping edge overpass the obstacle thanks to a Nitrogen accumulator in Hardox 400.



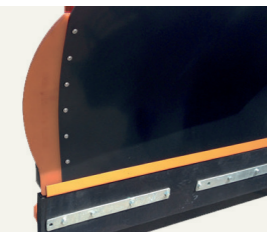
Snow Ploughs



**Electro-hydraulic control unit (optional)**  
Installed on the plough mounting plate when vehicle is not provided with own hydraulic system.



**Lateral shield protection low speed (option)**  
Realized in steel, they are ideal for clearing with contact near iced snow in mountain



**Lateral shield protection high speed (optional)**  
Realized in moulded polyurethane, they are ideal for clearing with contact near new-jersey barriers



**Carriages with pivoting wheels (optional)**  
Used to easily move the equipment when stored. A wheel per carriage is equipped with a parking brake.

**Giletta SpA**  
Via A. De Gasperi, 1  
I-12036 Revello (CN)  
tel. +39 0175 258 800  
fax. +39 0175 258 825  
giletta@buchermunicipal.com

**Giletta L**  
Ployethylene Snow Ploughs

## Giletta L

Monolithic medium-heavy plough L type, with HD polyethylene shield and a structure realized with high resistance steel. The Polyethylene is fixed to the structure with a system allowing the changing due to the temperature. The polyethylene material for shield warranty a long lifecycle against corrosion avoiding the friction of the snow, demanding less power with a better snow evacuation vs a classic steel shield.

Suitable for highways, airports and fast or trunk roads.

Engineered for any environmental condition, it can have Neoprene or steel scraping edges and a positive or negative angle of attack, depending on the snow conditions.

	L_28	L_30	L_32	L_34	L_36	L_38	
Scraping edge length (min/max)	2800	3000	3200	3400	3600	3800	mm
Working width at 30° (min/max)	2425	2600	2775	2950	3125	3300	mm
Minimum width for narrow passages at 30°	2470	2645	2820	2995	3170	3345	mm
Centre of gravity (single/double scraper)	845	845	845	845	845	845	mm
Max right-left rotation angle	32	32	32	32	32	32	°

### LC with neoprene scraping edge

Weight of basal version "LC"	505	520	535	550	575	590	Kg
Blade height	955	955	955	955	955	955	mm

### LN with double scraping edge, neoprene and steel

Weight of basal version "LN"	620	640	660	680	700	720	Kg
Blade height	1035	1035	1035	1035	1035	1035	mm

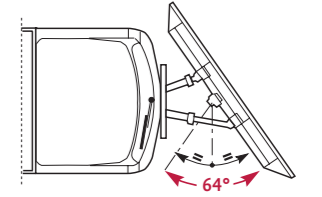
**Steel structure**  
Realised in high resistance steel.

**Neoprene bi-shore scraping edge**

**Steel scraping edge (optional)**  
Two hydraulic cylinders each sector, enable the steel scraping edge operation controlled by the cab.

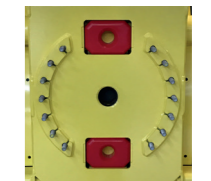
**Nitrogen accumulator**  
With steel scraping edge, a nitrogen accumulator allows the shock absorption.

**Rotation**  
Rotation angle from -32° to +32°



### Inclination system

Two polyurethane insert pressed when plough is inclined, release automatically when lifted to get it horizontal and safe to drive.



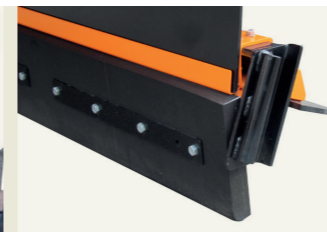
### Obstacle overcoming system with Neoprene scraping edge

The elasticity of the Neoprene scraping edge enables its deformation in case of impacts against fixed obstacles related to EN13021 norm, thus allowing an easy obstacle overcoming and its immediate return to the working position, without any rebound.



### Auxiliary spotlight kit (optional)

Available on request, in compliance with current traffic regulations, they back-up the vehicle lights and are adjustable.



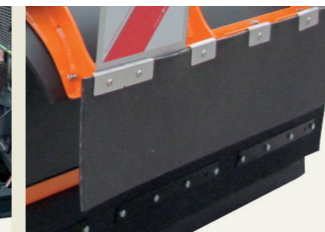
### Side bumpers (optional)

This bumpers each side protect the scraping edge in case of shock with lateral obstacle.



### 3 point connection (optional)

For farm tractors available in Cat. 2 and 3.



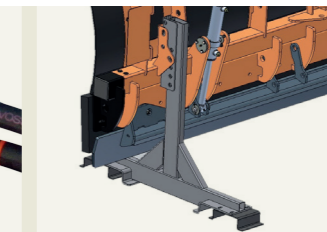
### Splash guard

Avoid snow splashes on the vehicle windscreen.



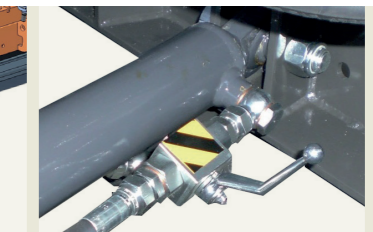
### Duplicator/triplicator valve (option)

In case of missing hydraulic function, an hydraulic duplicator/triplicatorv allow to rise the number of plough function from the cab control.



### Piedi di p Special parking feet (optional)

This system allow to store the plough with the scraping cutting edge unloaded (lifted from ground).



### Safety locking devices

On the lifting cylinder, one valve handled manually block it in high position for transport operation. This is realised in accordance with the safety regulations (CE).