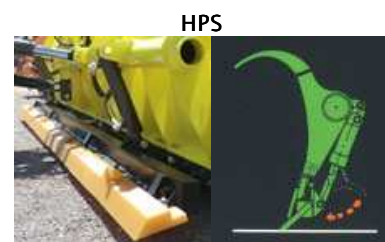
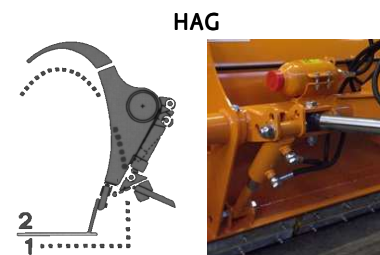
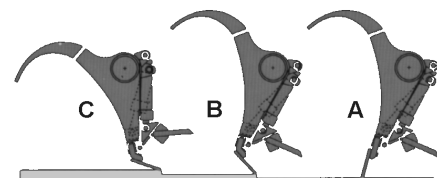
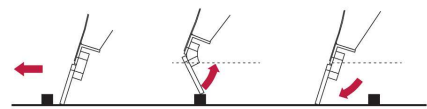


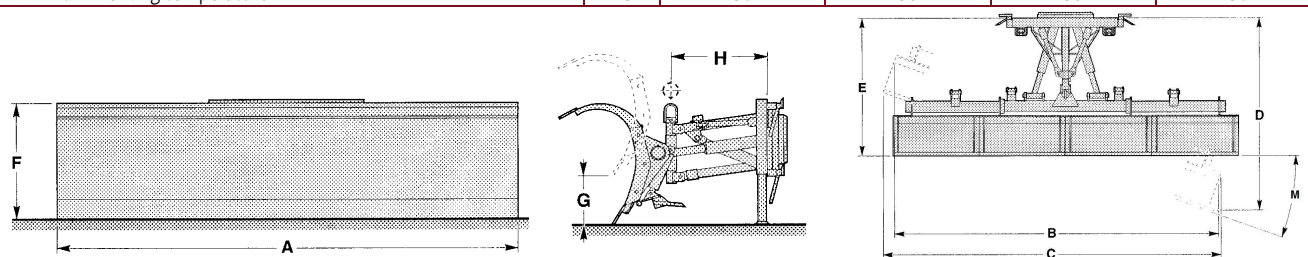
Assaloni.Com A90 High-level snow plough for motorways

Single-section **snowplough A90 for motorways**, with boxed construction blade, central tube and reinforcement ribs, for medium and heavy snowfalls, suitable for clearing snow at high speed both with scraping edges in steel and polyurethane.

- It is perfectly suitable for snow clearing all types of **highway, also in the mountains, and on traffic roads** where the work in speed is necessary.
- **Polyurethane inserts**, located between the blade and the scraper in steel, allow the scraping edge to rotate and surmount fixed obstacles assuring the absorption of grazing impacts.
- **"HAG"(optional)**, hydraulic adjustment allowing the **variation of the angle of incidence** with respect to the road surface, in order to better adapt to the quality and quantity of snow.
- The **Nitrogen accumulator** installed in the HAG circuit also allows the tilting of the entire blade in the event of shocks, by adding the effect to that of the polyurethane inserts, thus providing a **double safety**.
- A **by-pass valve**, inserted in the rotation circuit enables the absorption of lateral impacts.
- **"HPS"** (optional) Hydraulic device for **interchanging while working the steel scraping blade with a second in polyurethane**, according to the different types of snow. It allows a dual operational function by adapting the blade to different environmental conditions through a simple hydraulic operation.
- Hydraulic control for **right-left rotation**.
- Hydraulic control for **lifting-lowering operations**.
- Hydraulic controls to **operate the second scraping edge in HPS polyurethane** (if any).
- Hydraulic controls to allow the **variation of the hydraulic angle of incidence** with respect to the HAG road surface.
- **Central oscillation system** that locks the blade in horizontal position with raised blade and frees it completely to follow the road profile with lowered blade, in working position, providing an optimum clearance and an evenly wear of the scraper.
- **Stabilizers** (on central oscillation system) with adjustable spring for compensation the difference of weight on the two sides.
- Quick attachment plate to the vehicle is possible in different versions.
- Special sandblasting painting cycle certified **2000h in salt fog**.
- Steel scraping edge in **Hardox 400**.
- **LED** clearance lights on the two sides of the snowplough.
- Standard signs (lumifog and red and white stickers).
- Bolted rubber splash guard.
- Mechanic **supporting feet**.
- Standard hydraulic hose kit metric filleted 1/2" (8 tubes) with quick couplings M1/2" (standard ISO7241-1A)
- Standard voltage 24 volts.
- **Electrohydraulic unit** (optional) with in-cab controls, to move the plough by the simple connection of two cables to the battery.
- Instruction and maintenance manual, spare parts catalogue, EC conformity certificate, declaration of origin.
- **On request:** scraping edge in POLYURETHANE or KOMBI instead of the steel one, quick attachment of scraping blade, hydraulic supporting feet, lateral edges, safety wheel for New-Jersey barriers and other options.



TECHNICAL DATA		A90.35	A90.40	A90.45	A90.50
A - Length of scraping blade	mm	3500	4000	4500	5000
Number of scraping elements	No.	2	2	2	2
B₁ - Working width at 30°	mm	3030	3460	3900	4330
B₂ - Working width at 36°	mm	2830	3240	3640	4050
C - Minimum width for narrow passages at 36°	mm	3100	3500	3900	4300
D - Maximum protrusion during transfer	mm	2400	2550	2700	2850
E - Protrusion with blade up-right	mm	1550	1550	1550	1550
F - Height of blade	mm	1060	1060	1060	1060
G - Max height from ground	mm	400	400	400	400
Max lifting stroke	mm	600	600	600	600
Max obstacle height surmountable at 40 km/h	mm	50	50	50	50
H - Center of gravity	mm	900	900	950	950
Diameter piston rotation (piston/rod)	mm	60/95	60/95	60/95	60/95
Weight of standard version	Kg	980	1030	1080	1130
M - Max right-left rotation angle	°	36°	36°	36°	36°
Max attack angle of blade in steel or kombi	°	0° ÷ 25°	0° ÷ 25°	0° ÷ 25°	0° ÷ 25°
Minimum working temperature	°C	-30°	-30°	-30°	-30°



ADVISED VEHICLES TO EQUIP:	A90.35	A90.40	A90.45	A90.50
Unimog U20				
Unimog U300-U300L	■			
Unimog U400-U400L	■	□	□	
Unimog U500-U500L	■	■	■	■
Unimog U216-U218 (2800mm)				
Unimog U318 (3000mm)	■			
Unimog U423 (3000mm) and U423 (3600mm)	■	□	□	
Unimog U427-U430 (3150mm) and U427-U430 (3600mm)	■	□	□	□
Unimog U527-U530 (3350mm) and U527-U530 (3900mm)	■	■	■	■
Trucks 4x2 12T	□			
Trucks 4x4 12T	□			
Trucks 4x2 15T	■	□		
Trucks 4x4 15T	■	□		
Trucks 4x2 18T	■	■	□	□
Trucks 4x4 18T	■	□	□	□
Trucks 6x4 or 6x6 22T and more	■	■	■	■
Tractors 4x4 hp 100÷120	□	□		
Tractors 4x4 hp 130÷180	■	■	■	□
Tractors 4x4 hp 200÷280	■	■	■	■
Front loader with power hp 100÷120	□			
Front loader with power hp 130÷150	■	■	■	□
Front loader with power hp 160÷220	■	■	■	■

■ Suitable □ Compatible but not advisable

TECHNICAL NOTES FOR MOUNTING ON VEHICLES:

- The vehicle must be provided with a coupling plate equivalent to that one belonging to the chosen basal version and must have enough capacity (a preliminary capacity check is advisable).
- For the implement working in basal version with F1 or F2 coupling plate, if not already equipped with electro-hydraulic actuator, a hydraulic device on the vehicle is necessary with at least 3 double effect controls of which one with floating position.
- In the case of "HPS" or "DBH" hydraulic equipment (in the absence of electro-hydraulic unit) is necessary to provide a fourth double effect control and an exhaust pipe direct to the tank.
- In the case of side deflector with "A2" hydraulic adjustment (in the absence of electro-hydraulic power) is necessary to provide an additional double effect control.
- In case of clearing lights, the vehicle must be provided with a 7-pin electrical socket, conforming to the UNI-EN 15431 standard, in compliance with ISO1724 (12V) and ISO1185 (24V).

TECHNICAL NORMS:

- [DIRECTIVE 2006/42/CE \(CE MARK\)](#)
- [UNI EN 13021](#)