



Product Brochure

SPORT Gen 6 Side Loader

Bucher Municipal a strong partner at your side

Bucher Municipal is a world-leading manufacturer of municipal vehicles for street cleaning, waste collection and snow removal in public and private areas. Bucher Municipal stands for high-quality products and service excellence, as well as innovation, competency, reliability and sustainability. Our vehicles incorporate technically advanced solutions focusing on high performance, ease of use, low maintenance and cost-effective operation.

Bucher Municipal takes its responsibility towards society and the environment seriously. Our mission is to ensure that roads and private or public spaces are kept clean and safe. Bucher Municipal implements this mission by focusing on functional engineering, environmental integrity and driving comfort. Bucher Municipal has a worldwide sales and service network to ensure that it can offer service excellence close to its customers.



About Us

Company Overview

Bucher Municipal is one of the five core divisions of the global industrial group Bucher Industries, and is today recognised as the leading provider of equipment to the Australian Waste Industry.

Bucher Municipal boasts an impressive product range including Side, Rear and Front loading Refuse machines, Static Compactors and Baling equipment, Compact and Truck Mounted Sweepers as well as Vacuum Tankers.

Every Bucher Municipal machine is application engineered, manufactured in Victoria and supported by a passionate after sales support team that operates 24/7, 365 days a year.

Engineering

Bucher Municipal boasts a large Australian based Engineering Department covering Research & Development and Applications Engineering with a combined service of 160 years with the company.

The multi-discipline engineering team has all fields covered including mechanical, electrical, hydraulic, systems and applications engineering.

The team includes dedicated technicians within the R&D workshop for prototype builds and development.

Manufacturing

Bucher Municipal's manufacturing capability is world class and features:

- Two Australian manufacturing facilities; Clayton & Scoresby in Victoria.
- Ability to produce the complete range of refuse products on one production line.
- State of the art paint facilities featuring:
 - >> Climate controlled
 - >> Dustless paint process
 - >> Finished to Automotive standard
 - >> OH&S initiatives such as Wall-Man ladder units
- Flowing production lines, including line side inventory and tooling. Specific processes, parts and tools are located and performed at each station, improving labour efficiency and throughput.
- All fabricated components are supported with 3D computer design models and corresponding jigs and fixtures to provide consistent quality and performance of products.
- All designs are Finite Element (FEA) tested to ensure each machine is robust enough to stand the test of time while providing industry leading payloads for our customers.
- Independent quality processes and auditing provide quality assurance and traceability.

After Sales Support

Bucher Municipal provides national after sales support, which is unsurpassed within the industry.

With their national branch network covering spare parts, service, warehousing and distribution, and their extensive fleet of service vehicles, Bucher Municipal can address all service requirements on location Australia wide.

- 7 State of the Art Retail Facilities located in Adelaide, Brisbane, Perth, Sydney and Melbourne.
- 24/7 Field Service Support.
- 9,000 Lines of Parts with Inventory located in every State.
- 44 Service Vehicles.
- Factory Trained Technicians.
- Repair & Maintenance Packages.

Gen 6 Side Loader

The iconic Side Loader continues to evolve...



Since its release in 2006, the Bucher Municipal SPORT Gen V has led the market in Side Loader Refuse collection equipment.

Over the years we have been listening to our customers and working towards addressing the ever changing needs of the Side Loader refuse industry.

With its many improvements and numerous industry first innovations, including the new UG-6 Grab, the iconic SPORT, which stands for Single Person Operated Refuse Truck, has evolved once again into a product that exceeds customer's expectations in the areas of Durability, Productivity, Safety and Reliability.

Bucher Municipal is proud to introduce the SPORT Gen 6 Side Loader.

Available in a variety of sizes, the SPORT Gen 6 Side Loader is ideal for use in a range of applications from domestic general waste, to recycle and green waste collection.

Body sizes available: 14, 18, 22, 25, 29, 35m³ and the new 20m³ Xtreme Side Loader

Fast Facts

- Available in a range of body sizes including 14, 18, 20, 22, 25, 29 & 35m³, ensuring there is a suitable size Gen 6 Side Loader for all applications.
- New Bucher iQ CANBus Control System with fully integrated 12" Touch Screen.
- New UG-6 Grab is capable of picking up the full range of 2 wheeled MGBs with reduced maintenance costs.
- Extend-A-Slide offers Australia's longest bin lifter reach at 3,796mm for more efficient operation around parked cars and cul-de-sacs*.
- New Hydraulic oil tank with reduced oil volume and integrated cooling system for low oil temperature and lower maintenance costs.
- Improved Subframe, body and tailgate design for greater strength and longer working life.
- Australia's lowest body profile at 2,198mm (including sub frame)*.
- 35m³ body offers Australia's largest recycling capacity. Based on a compaction density of 220kg/m³, a payload of 7,700kg can be achieved*.
- Australia's largest bin lifting capacity at 180kg*.
- Australia's fastest bin lifter, capable of lifting 6 bins per minute*.
- Australia's hardest wearing hopper, constructed from 8mm Creusabro 8000 material for longer working life*.

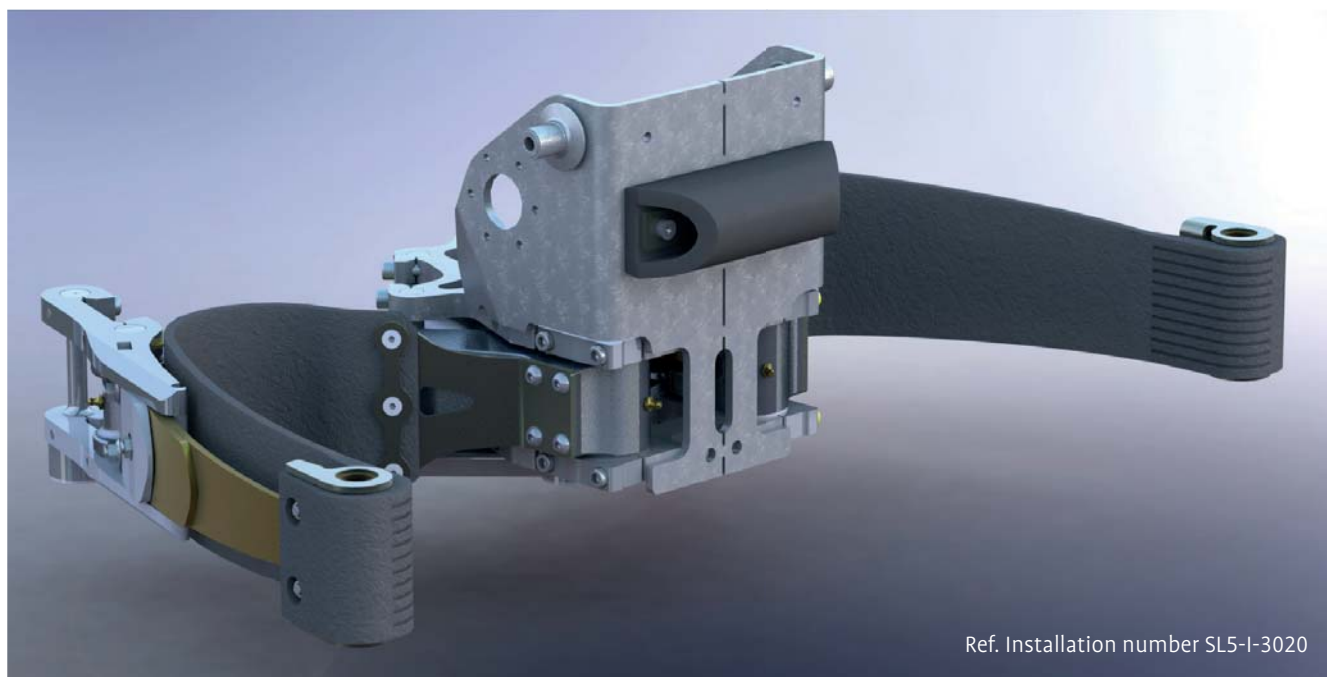
* Subject to body configuration and options selected.



Bucher Municipal • 65-73 Nantilla Rd, Clayton North, Vic. 3168 AUS
Phone +61 3 9271 6400 • Fax +61 3 9271 6480
refuse@buchermunicipal.com.au • www.buchermunicipal.com.au

Due to continuous development Bucher Municipal reserves the right to alter specifications without prior notice.

Introducing the UG-6 (Universal Grab 6)



Ref. Installation number SL5-I-3020

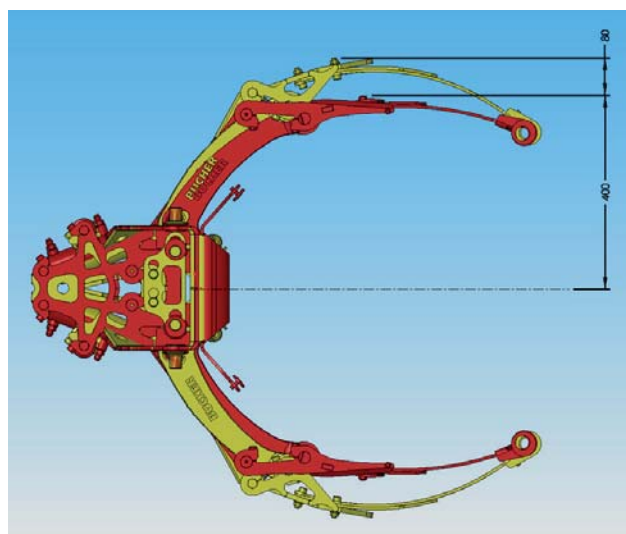
The UG-6 Grab is now fitted as standard to all Gen 6 Side Loaders, providing lower maintenance costs and improved productivity.

Features & Benefits

- One Standard Grab can pick up the full range of MGB's from 60L-360L.
- Narrower grab arm design provides easy access to bins placed close together, providing up to 20% improved productivity.
- Innovative Grab knuckle design provides narrowest stowed width.
- Grab can be positioned closer to the cab and bin lift operation can occur closer to the kerb.
- More robust cast arm and spring design for a longer working life.
- Grab belt repositioned to allow for full range of MGB's without belt adjustment.
- New arm and grab cylinder geometry provides a greater clamping force reducing bin slippage, preventing lost bins and increasing belt life up to two times as long.
- The new geometry and larger pins & bushes provides a reduction in greasing and also reduces wear on parts for a longer working life.
- Field tested and proven, with over 2000hrs of in field operation, prior to release to market.
- Bin Lifter weighing system now available for individual bin weighing capability.

Narrower grab arm design provides easier access to bins placed close together, providing up to 20% improvement in productivity!

The UG-6 provides an 80mm reduction in arm width on either side of the bin.



Previous design (Yellow) – New Design (Red)

Gen 6 Hydraulic Oil Tank & Cooler Package



The SPORT Gen 6 has a new and improved Hydraulic Oil Tank and Cooling Package to provide efficient and low cost operation. Specifically designed and manufactured for Bucher Municipal, the custom made tank provides many features and benefits for the Gen 6 Side loader customer and operator.

Features & Benefits

- Moulded plastic Hydraulic oil tank and integrated cooler uses proven technology developed to withstand heavy duty applications.
- Lower Oil Volume (Approx. 60L less than previous tank) provides lower maintenance and oil replacement costs.
- Advanced Degassing technology allows for lower oil volume and protects pump from cavitation.
- Oil Cooler reduces oil temp by 30% providing greater efficiency through the hydraulic system and improved productivity.
- Lower oil temp increases oil and component life, including seals, for reduced maintenance intervals and lower whole of life costs.
- Oversize filtration system provides longer filter life and reduced maintenance costs.
- Oil tank and cooler integrated into one assembly for easy installation and maintenance.
- Integrated Hydraulic oil level, temperature gauge and filter clog sensors providing information to the control system.
- Ability to use biodegradable hydraulic oil to protect the environment in the event of oil spillage.

The new Gen 6 Hydraulic Oil Tank and Cooling Package provides up to 35% reduction in maintenance costs!*

* Based on standard OEM recommended servicing.



Gen 6 Bucher iQ Control System with 12" Touch Screen



The Gen 6 Bucher iQ CANBus Control System comes complete with a fully integrated 12" Touch screen providing the operator with the latest technology and user interface for ease of operation. Designed in collaboration with Bucher Engineers, the new touch screen monitor replaces the previous push button control console and provides access to all body/compaction functions and system maintenance through the one screen.

Features & Benefits

- Bucher iQ CANBus Control System with diagnostic interface is fully configurable and provides easy navigation through its on screen menu.
- 12" Touch Screen provides access to the entire control system from the one control console for a cleaner in-cab layout.
- Easy to use tactile keys and touch screen controls for simple operation of all body and compaction functions.
- Fully integrated camera system provides camera views on the same screen reducing the need for multiple screens in the cab.
- On screen warnings provide the operator with visible notifications for optimal safety.
- Animated and lit-up on screen icons provide visual confirmation of functions currently in operation for improved driver awareness and safety.
- New System platform provides the ability to integrate new technology and options.
- Software managed in-house by Bucher Engineers to reduce lead time on upgrades.
- 4 Button Joystick and ergonomic armrest fitted as standard with alternative control handle options available.



Technical specifications: Standard Body

General Data	14M³	18M³	20M³	22M³	25M³	29M³	35M³
Body capacity	14m³	18m³	20m³	22m³	25m³	29m³	35m³
Hopper capacity	1.3m³				1.5m³		
Cab chassis configuration	4x2 - 12,000 - 15,000kg GVM	4x2 - 15,000kg GVM	6x4 - 23,000kg GVM	6x4 - 23,000kg GVM	4x2 - 15,000kg GVM 6x4 - 23,000kg GVM	6x4 - 23,000kg GVM	6x4 - 23,000kg GVM
Wheelbase (Approx)	4,000mm	4,400mm	4,400mm	5,000mm	5,000mm	5,200mm	5,500mm
Body length (Including Hopper)	5,103mm	5,888mm	6,180mm	6,973mm	6,775mm	7,275mm	7,969mm
Body height (Excluding Chassis)	2,198mm				2,615mm		2,777mm
Body width (Overall)	2,496mm						
Body weight	4,050 kg	4,270kg	4,890kg	4,730kg	5,100kg	5,235kg	5,596kg
Body tipping angle	35 - 42 degrees						
Body - raised height (Approx.)	5,500mm	5,950mm	6,100mm	6,450mm	6,350mm	6,750mm	7,350mm
Tailgate opening angle	115 degrees						
Performance							
Payload*	4,000 - 5,000kg	5,000 - 6,000kg	9,000 - 10,000kg	10,000 - 11,000kg	4x2 3,500 - 4,500kg 6x4 8,000 - 9,000kg	9,000 - 10,000kg	9,000 - 10,000kg
Bin lifting capacity	125kg - 180kg						
Bin suitability	60L, 80L, 120L, 140L, 240L & 360L						
Bin lifter reach	3,186mm - 3,796mm						
Bin lifter cycle time (Total)	8 - 12 Seconds**						
Paddle cycle time	10 Seconds						
Operating rpm	800 - 950 rpm - Adjustable						
Compaction density (Refuse)	400 - 500kg/m³ - Adjustable						
Compaction density (Recycling)	180 - 220kg/m³ - Adjustable						
Paddle displacement rate	2.8m³/minute						
Controls and Hydraulics							
Control system	CANBus control system with 12” Touch screen						
Operator interface	Proportional multi-function joystick with Touch screen and push button controls						
Hydraulic pump	Twin variable displacement pump - 2 x 74L/min						
Maximum system pressure	210 bar						
Hydraulic valving	Proportional hydraulic control valves						
Hydraulic piping	Zinc plated steel piping						
Hydraulic filters	10 Micron 200 Beta filters						
Hydraulic oil tank	140L Plastic Tank with Integrated Cooler						
Material Listing							
Body side sheets	3.2mm Wear Resistant Steel +						
Body floor sheet	3.2mm Wear Resistant Steel +						
Body roof sheet	3mm Grade 350 Steel					3mm Grade 300 Steel	3.2mm Wear Resistant Steel +
Tailgate sheets	3mm Grade 350 Steel						
Hopper bowl floor	8mm Cruesabro 8000						
Hopper bowl sides	8mm Cruesabro 8000						
Hopper walls	4mm Grade 350 Steel						
Paddle	12mm Grade 350 Steel						

* Subject to loading conditions, waste type, fitted options and cab chassis selection

** Cycle includes picking up bin at full reach, emptying into hopper and returning to original position

+ Hardox 450 or Equivalent Material, subject to availability

Productivity specifications: General Waste

Body Size		14m ³	18m ³	20m ³	22m ³	25m ³	29m ³
Cab chassis configuration		4x2	4x2	6x4	6x4	6x4	6x4
Compaction density ^{*1}		400 - 500 kg/m ³ - Adjustable		450 - 500 kg/m ³ - Adjustable	400 - 500 kg/m ³ - Adjustable		
Average Payload ^{*2}		Approx. 4,000 - 5,000kg	Approx. 5,000 - 6,000kg	Approx. 9,000 - 10,000kg	Approx. 10,000 - 11,000kg	Approx. 8,000 - 9,000kg	Approx. 9,000 - 10,000kg
Average number of 120L bins ^{*3}		Approx. 500 bins	Approx. 600 bins	Approx. 1000 bins	Approx. 1100 bins	Approx. 900 bins	Approx. 1000 bins
Maximum bin loading rate ^{*4}		6 bins/minute = 360 bins/hour					
Average bin loading rate ^{*4}		4 bins/minute = 240 bins/hour					
Hopper volume		1.3m ³				1.5m ³	
Hopper clearance rate		6 bins/minute = 360 bins/hour					
Bin lifter operation times ^{*5}	Total bin lifter cycle time	8 - 12 seconds					
	Bin lifter - raise	2.5 - 3.0 seconds					
	Bin lifter - lower	2.5 - 3.0 seconds					
	Bin lifter grab - open	1.2 - 1.5 seconds					
	Bin lifter grab - close	1.2 - 1.5 seconds					
	Bin lifter slide - fully extend	2.8 - 3.2 seconds					
	Bin lifter slide - fully retract	2.7 - 2.9 seconds					
Body operation times ^{*5}	Tailgate - open	20 - 25 seconds					
	Tailgate - close	20 - 25 seconds					
	Body - raise	30 - 35 seconds					
	Body - lower	35 - 40 seconds					
Suitable bin sizes	60L - 360L	Available on all body sizes *6					

KEY:

*1 - Indicative values only. Subject to loading conditions and waste type

*2 - Indicative values only. Subject to loading conditions, waste type and cab chassis selection

*3 - Based on 10kg 120L refuse bin weight. (Average weight obtained from independent market research & may vary in some regions)

*4 - Data obtained from customer trials

*5 - Indicative values only. Subject to loading conditions and cab chassis selection

*6 - Heavy duty bin lifter option recommended for 360L bins

NOTE: Bucher Municipal exercises a program of continual product development, and in this context reserve the right to amend specifications without prior notice

Productivity specifications: Recycle Waste

Body Size		22m ³	25m ³		29m ³	35m ³
Cab chassis configuration		6x4	4x2	6x4	6x4	6x4
Compaction density* ¹		180 - 220kg/m ³ - adjustable				
Average Payload* ²		Approx. 4,480kg	Approx. 4,000-5000kg	Approx. 5,500 kg	Approx. 6,380kg	Approx. 7,700kg
Average number of 240L bins* ³		Approx. 605 bins	Approx. 560 bins	Approx. 688 bins	Approx. 798 bins	Approx. 963 bins
Maximum bin loading rate* ⁴		6 bins/minute = 360 bins/hour				
Average bin loading rate* ⁴		4 bins/minute = 240 bins/hour				
Hopper volume		1.3m ³	1.5m ³			
Hopper clearance rate		8 bins/minute = 480 bins/hour* ⁵				
Bin lifter operation times* ⁶	Total bin lifter cycle time	8 - 12 seconds				
	Bin lifter - raise	3.0 - 3.5 seconds				
	Bin lifter - lower	2.5 - 3.0 seconds				
	Bin lifter grab - open	1.2 - 1.5 seconds				
	Bin lifter grab - close	1.2 - 1.5 seconds				
	Bin lifter slide - fully extend	2.8 - 3.2 seconds				
	Bin lifter slide - fully retract	2.7 - 2.9 seconds				
Body operation times* ⁶	Tailgate - open	20 - 25 seconds				
	Tailgate - close	20 - 25 seconds				
	Body - raise	30 - 35 seconds				
	Body - lower	35 - 40 seconds				
Suitable bin sizes	60L - 360L	Available on all body sizes * ⁷				

KEY:

*1 - Indicative values only. Subject to loading conditions and waste type

*2 - Indicative values only. Subject to loading conditions, waste type and cab chassis selection

*3 - Based on 8kg 240L commingled waste bin. (Average weight obtained from independent market research & may vary in some regions)

*4 - Data obtained from SPORT Gen 6 customer trials

*5 - Double paddle option required

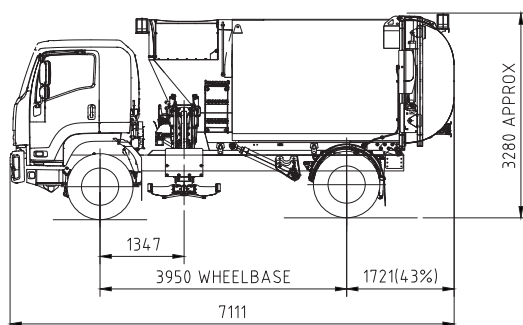
*6 - Indicative values only. Subject to loading conditions and cab chassis selection

*7 - Heavy duty bin lifter option recommended for 360L bins

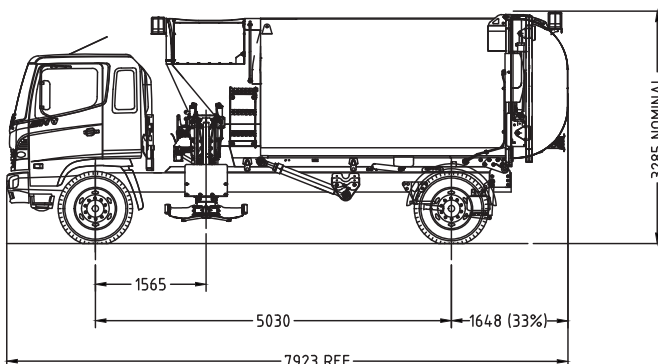
NOTE: Bucher Municipal exercises a program of continual product development, and in this context reserve the right to amend specifications without prior notice

Overall Dimensions

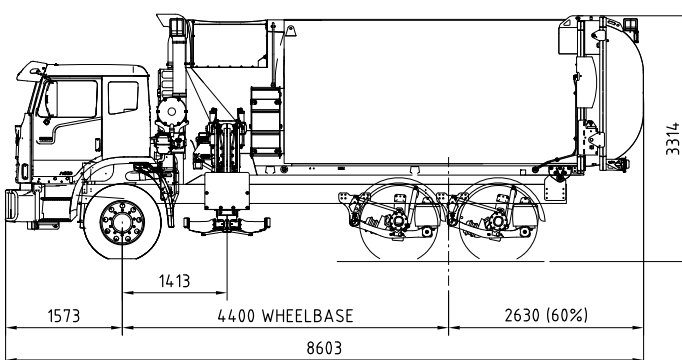
SPORT 14m³



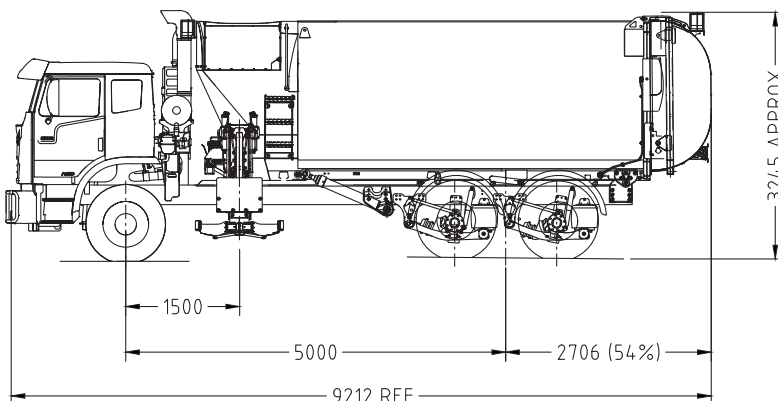
SPORT 18m³



SPORT 20m³ Xtreme



SPORT 22m³



Please Note:

Layouts shown are for optimal wheelbase and axle configurations only and not specific to chassis make and model.

Dimensions are subject to chassis, wheelbase and option selection.

Refer NHVR or local state regulations for Rear Overhang allowances.

Bucher Municipal • 65-73 Nantilla Rd, Clayton North, Vic. 3168 AUS

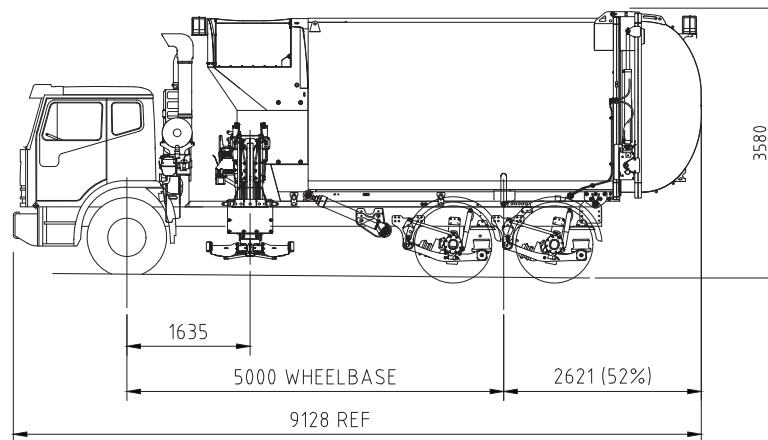
Phone +61 3 9271 6400 • Fax +61 3 9271 6480

refuse@buchermunicipal.com.au • www.buchermunicipal.com.au

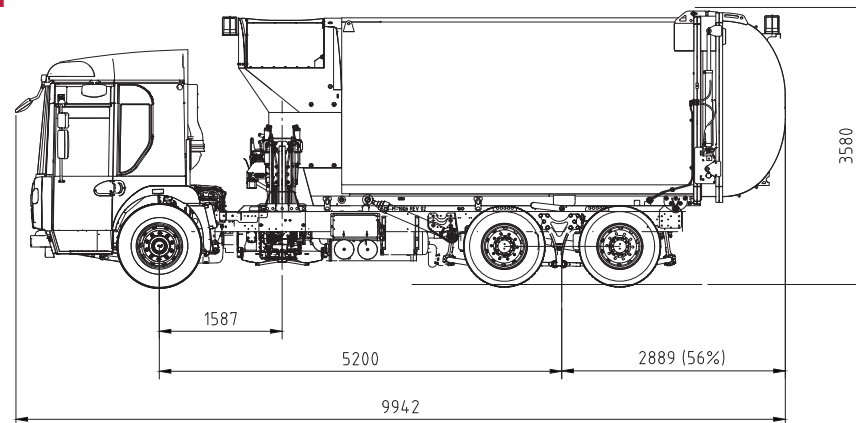
Due to continuous development Bucher Municipal reserves the right to alter specifications without prior notice.

Overall Dimensions

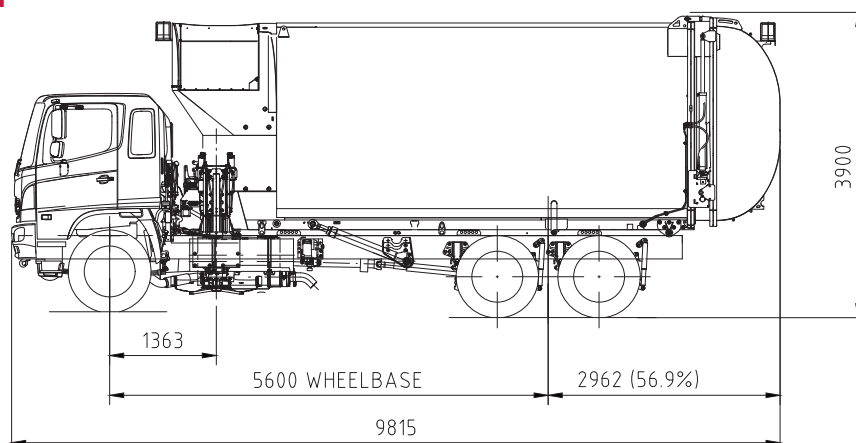
SPORT 25m³



SPORT 29m³



SPORT 35m³



Please Note:

Layouts shown are for optimal wheelbase and axle configurations only and not specific to chassis make and model.

Dimensions are subject to chassis, wheelbase and option selection.

Refer NHVR or local state regulations for Rear Overhang allowances.

Bucher Municipal • 65-73 Nantilla Rd, Clayton North, Vic. 3168 AUS

Phone +61 3 9271 6400 • Fax +61 3 9271 6480

refuse@buchermunicipal.com.au • www.buchermunicipal.com.au

Due to continuous development Bucher Municipal reserves the right to alter specifications without prior notice.

Standard Features and Accessories



Safety

Full OH&S compliance.
Tailgate safety check valve & automatic tailgate lock.
Bin lifter automatically retracts above 4Kph
Fold down hopper access ladder with safety interlock.
Integrated self-aligning tailgate and body safety props.
Anti-burst valves on hydraulic cylinders In cab warning system.
Emergency stops to disable all functions.



Body

Constructed from single sheet rolled wear resistant and High Grade steel.
Body designed and tested for 10+ year life expectancy.
Low profile body and compact tailgate provides compact overall dimensions.
Full length body subframe supporting body and bin lifter.
Dual body tipping cylinders.
Water tight tailgate seal.
Automatic airbag suspension-dump when raising body.



Hopper & Paddle

Large capacity hopper.
Innovative hopper design allows body to be positioned closer to back of cab.
New high paddle design provides greater hopper clearance in general waste applications.
Hard wearing Creusabro 8000 hopper bowl.
Dual electronically controlled paddle cylinders.
Centralised 6 point paddle lubrication system.
Automatic paddle shut off.



Lighting

High and low mount LED tail lights with guards.
Rear mounted amber flashing beacon light with guard.
Front mounted amber flashing beacon light with guard.
LED Hopper work light.
LED Bin lifter work light.
Two rear LED search lamps.
Bin lifter warning lights.



Hydraulics

Energy efficient hydraulic system.
Twin high capacity load sensing pumps.
Light weight hydraulic oil tank and cooler mounted on bin lifter assembly.
Cushioned hydraulic cylinders.
Hydraulic tank ball valves.
Hydraulic tank level and temperature gauge.
10 Micron filters on pressure & return lines.



Electrical Control System

Bucher iQ CANBus control system with diagnostic interface.
Fully configurable control, complete with on screen menus.
Control handle – 4 button joystick with Ergonomic armrest.
Emergency stop on armrest.
Dual tipping controls – Touch screen and joystick.



Gen 6 Touch Screen Controls

12" Touch Screen with integrated controls and maintenance system.
Colour LCD Screen with built-in warning system. On screen bin counter, hour meter and Payload data if weighing system fitted.
Integrated camera system with split screen capabilities.



UG-6 Bin Lifter

One Grab suits all 2 wheeled MGB's.
It's innovative grab knuckle and narrow arm design provides narrow stowed width and access to bins placed close together.
Standard lift capacity 125kg with 180kg option.
Spill flap fitted to prevent spillage during discharge.



Broom & Shovel holder

Fitted to left hand side for safe storage and access of both broom and shovel.



Mudguards and Mudflaps

Plastic mudguards fitted to rear axles.
Various colours available.
Bucher branded mudflaps.



Paint finish

Premium single colour 2 pack paint.
Fully surface prepped, painted and baked on site in a state of the art paint booth



Service & Warranty

First service labour costs included.
1 year/2500hours Warranty provides comprehensive protection.
Technical & Spare parts Manual.
Contact us for maintenance packages.

Comprehensive Range of Options and Accessories

Contact us for more information.



Heavy duty bin lifter (180kg)

Larger capacity actuator barrels provide an improved lift capacity of up to 180kg (swl).



Aluminium/stainless steel mudguards

Various aluminium/stainless steel mudguard options available for improved aesthetics and durability compared with standard plastic mudguards.



Automatic greasing system

For regular automatic greasing of high wearing items. Eliminates need for manual greasing and ensures maximum component life for reduced maintenance costs.



Bin Shaker (Auto & Manual)

Automatically shakes bin when tipping into hopper for easy discharge. Can be switched on/off in menu. Fully configurable to suit operator preference.



Colour camera system

Multiple camera brands available. Camera views integrated into Bucher control system 12" LCD screen. Single screen for less clutter in cab. DVR options also available for camera recording.



Control handle – Palmtop

Interchangeable joysticks to suit operator preference. Programmable buttons.



Control handle – Broomstick

Interchangeable joysticks to suit operator preference. Programmable buttons.



Remote bin lifter controls

Mounted inside cabin door. Eliminates the need for an operator to climb back into the cab to operate the bin lifter after manually moving the bins. 2-handed control functionality to ensure safe operation away from the bin lifter.



Double Paddle

Additional paddle foot mounted above standard paddle for improved hopper clearance by 2 bins per minute. For bulky material such as cardboard or green waste.



Engine Advance on/off

Allows vehicle to run at lower engine rpm for quieter operation of vehicle in sensitive areas or at sensitive times. Includes Adaptive packing when enabled.



Extend-A-Slide

Australia's longest bin lifter reach of 3,796mm. Allows easy access to bins past obstacles such as parked cars. Eliminates the need for operators to exit the vehicle and reposition bins.



Fall arrest system

Industrial Fall Arrest Systems and devices. Complies with AS/NZS 1891. Harness and safety cable connect operator to top of body for safe access to hopper.

Comprehensive Range of Options and Accessories continued...

Contact us for more information.



Fire Suppression system – Body

Water spray system inside the body to allow dousing of fire without opening the tailgate.

Fire hydrant and hose connections provided at ground level.



Fire Extinguisher 4.5 – 9kg

Dry Chemical Type. Suitable for a range of fires including flammable liquids, electrical components and combustible materials such as wood, paper and plastics.



Garbage / Recycle Switch

Adjustable compaction ratio to maximise payload for all waste types.

Ensures regulatory compaction density for commingle recycling waste is not exceeded.



Green waste body

Roof of body constructed from stainless steel to resist corrosion from nitrogen vapours released from green waste.

Extends body life and reduces maintenance costs.



Hand wash & Soap dispenser 23L

Plastic construction with recessed tap. Ensures durability of unit for long life. Integrated soap dispenser so operators can thoroughly wash hands to prevent spread of bacteria.



Hella LED Tail lights

Hella brand tail lights are available to suit your existing fleet if required.



Side mounted work lamps

Provides additional lighting on either side of the chassis illuminating the rear axles for operation in low light.



Third party serial port interface

The Bucher iQ CANBus control system provides serial data output to third party systems including fuel usage, engine hours, kms etc.



MGB lid carrier *

Mounted on top of toolbox and allows spare MGB lids to be carried on truck for customer replacement. Suits 60L – 360L MGB's.



Rear Under run bumper

Mounted to chassis rail at rear of vehicle. Prevents passenger vehicles from going underneath the truck in the event of a rear end collision.



Reverse Sensor system

When objects are detected behind vehicle while reversing, warning lights and sounds alert operator to objects behind vehicle. Reduces risk of injuries to pedestrians and damage to vehicle and property.



Semi Automatic bin lifter

Controlled by foot pedal or joystick button in cabin. Bin is automatically returned to its original location after being lifted and tipped into hopper manually by operator. Reduces risk of RSI for operator.

* Subject to options and chassis configuration

Comprehensive Range of Options and Accessories continued...

Contact us for more information.



Spray Suppressant on wheel arches

Contains spray from wheels for safe vehicle operation in the wet.



Toolbox

Durable steel toolbox fitted to LH side of vehicle for safe access and storage of operator's items. Stainless steel version also available.



Tow hook

Tow hook fitted to rear of chassis rail. Allows vehicle to be safely towed out of soft ground at landfill sites.



Twin rear beacons

Two rear beacons with guards. Fitted to top of tailgate for additional visibility and safe operation in low light.



Weighing system – Underbody

Bucher Municipal's underbody load cell Weighing System fully integrated into our own CANBus control system. Bucher owned and supported Australia wide by our National Branch Network. Can be integrated with third party computer system.



Weighing system – Bin lifter

Bin lifter mounted loadcells to provide individual bin weight. Can be integrated with third party computer system.



Wind deflector

Fitted to front of hopper to prevent air swirl and ensuring rubbish is not blown out of hopper during transit.



Additional cab/body paint & Signwriting

Alternative paint colours and customised signwriting is available to suit customer's specifications.



Technical Manual – Additional copies

Either printed copies or USB sticks are available for purchase.



Bucher Municipal Genuine Service

Extended warranty available providing comprehensive protection for 2 years or 4800hrs. Maintenance packages available. Contact us for more information.



Driver Training

Operator training provided by Bucher Municipal staff. Ensures operators are familiar with controls and body functionality for safe and efficient vehicle operation.

Introducing the new XTREME Side Loader



Bucher Municipal is proud to introduce the Xtreme Side Loader, providing extreme Maneuverability, Payload, Safety, Bin Lifter Reach and Productivity. With its short 4400mm wheelbase and compact body design, the Xtreme Side Loader can provide 10T payloads in the most compact 6x4 chassis configuration achievable.

Features & Benefits

- **XTREME Maneuverability:**
Shortest wheelbase 6x4 chassis providing the best turning circle in the market.
- **XTREME Payload:**
Increased compaction ratio enables 10T+ payload with the shortest body length and lowest height.
- **XTREME Safety:**
Compact overall dimensions increase safety and productivity in narrow streets and areas with limited access.
- **XTREME Reach:**
With Extend-A-Slide bin lifter it provides the longest reach for easy access to bins in cul-de-sacs. On screen warnings provide the operator with visible notifications for optimal safety.
- **XTREME Productivity:**
More bins per hour with improved access to multiple bins placed close together with the new UG-6 Grab.



SERIES: SPORT GEN 6 SIDE LOADER: 14M³ - 35M³
DATE: NOVEMBER 2018

Customer Support Centre

65-73 Nantilla Road,
Clayton North, Vic.
3168 Australia
Phone +61 3 9271 6400
Fax +61 3 9271 6480

**Customer Service Centre
Southern Region (VIC/TAS)**

Unit 6, 80-84 Fairbank Road,
Clayton South, Vic.
3169 Australia
Phone +61 3 8558 3600
Fax +61 3 8558 3640

**Customer Service Centre
Central Region (NSW)**

Unit 2, 9 Enterprise Place,
Wetherill Park, NSW
2164 Australia
Phone +61 2 8787 9600
Fax +61 2 8787 9696

**Customer Service Centre
Western Region (WA,SA,NT)**

76 Grey Street,
Bassendean, WA
6054 Australia
Phone +61 8 9370 7900
Fax +61 8 9370 7998

**Customer Service Centre
Northern Region (QLD)**

50 Buchanan Road,
Banyo, QLD
4014 Australia
Phone +61 7 3363 6400
Fax +61 7 3363 6499

**Customer Service Centre
Western Victoria**

35 Spencer Street,
Sunshine, Vic.
3020 Australia
Phone +61 3 9314 8928
Fax +61 3 9318 0938

**Customer Service Centre
Central Region (NSW)**

35 Walker Street,
South Windsor, NSW
2756 Australia
Phone +61 2 4577 3099
Fax +61 2 4577 3022

**Customer Service Centre
South Australia**

4 Newcastle Crescent,
Cavan, SA
5094 Australia
Phone +61 8 8168 2222
Fax +61 8 8168 2240

refuse@buchermunicipal.com.au
www.buchermunicipal.com.au

The current Bucher international locations.

